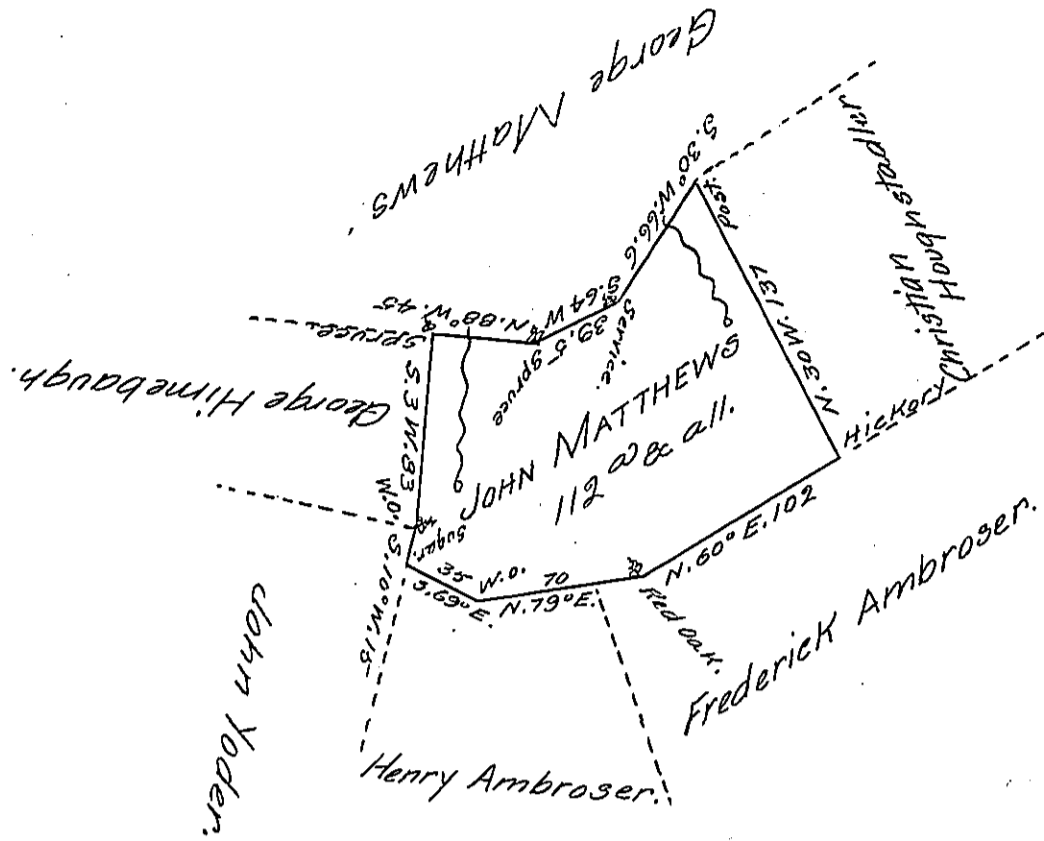


Note, there appears to have been no improvement upon this Land when the Warrant issued.

J. W. D. S.

To R. T. L. Esqr., S. G.



Situate on the Waters of Blue Lick Creek in Brothers Valley Township Somerset County (late Bedford County) and surveyed the 15th day of August 1796 by Alexander McClean Esquire then Deputy Surveyor in pursuance of a Warrant dated the 25th day of June 1793 as appears by his Official Draught remaining in my Office and now the 18th Day of September 1815 Certified by me.

John Wells Deputy—

To Richard T. Leech Esquire
Surveyor General of Penns^a

IN TESTIMONY that the above is a copy of the original remaining on file in the Department of Internal Affairs of Pennsylvania, made conformably to an Act of Assembly approved the 16th day of February, 1833, I have hereunto set my Hand and caused the Seal of said Department to be affixed at Harrisburg, this first day of February 1906

Seaco R. Brown
Secretary of Internal Affairs